

# 3 Pine West Plaza



Touhey Associates is a family owned company with over 35 years of experience in real estate acquisition, development and property management. We own and manage over 1 million square feet of office and warehouse space throughout the Capital Region. Pine West Plaza is a full service office park located only minutes from all major highways and routes.

BUILDING SIZE:	22,500 SF
SIZE OF SPACE:	1,455 RSF <i>Former Dentist Office!</i>
CEILING HEIGHT:	9'
SPRINKLER:	No
NATURAL GAS/ AIR CONDITIONING:	Yes
WATER/SEWER:	Public
ELECTRIC SERVICE:	600 Amp, 480V, 3 Phase
ROOF:	EPDM
CONSTRUCTION:	Masonry
PARKING:	Ample

**TOUHEY  
ASSOCIATES**

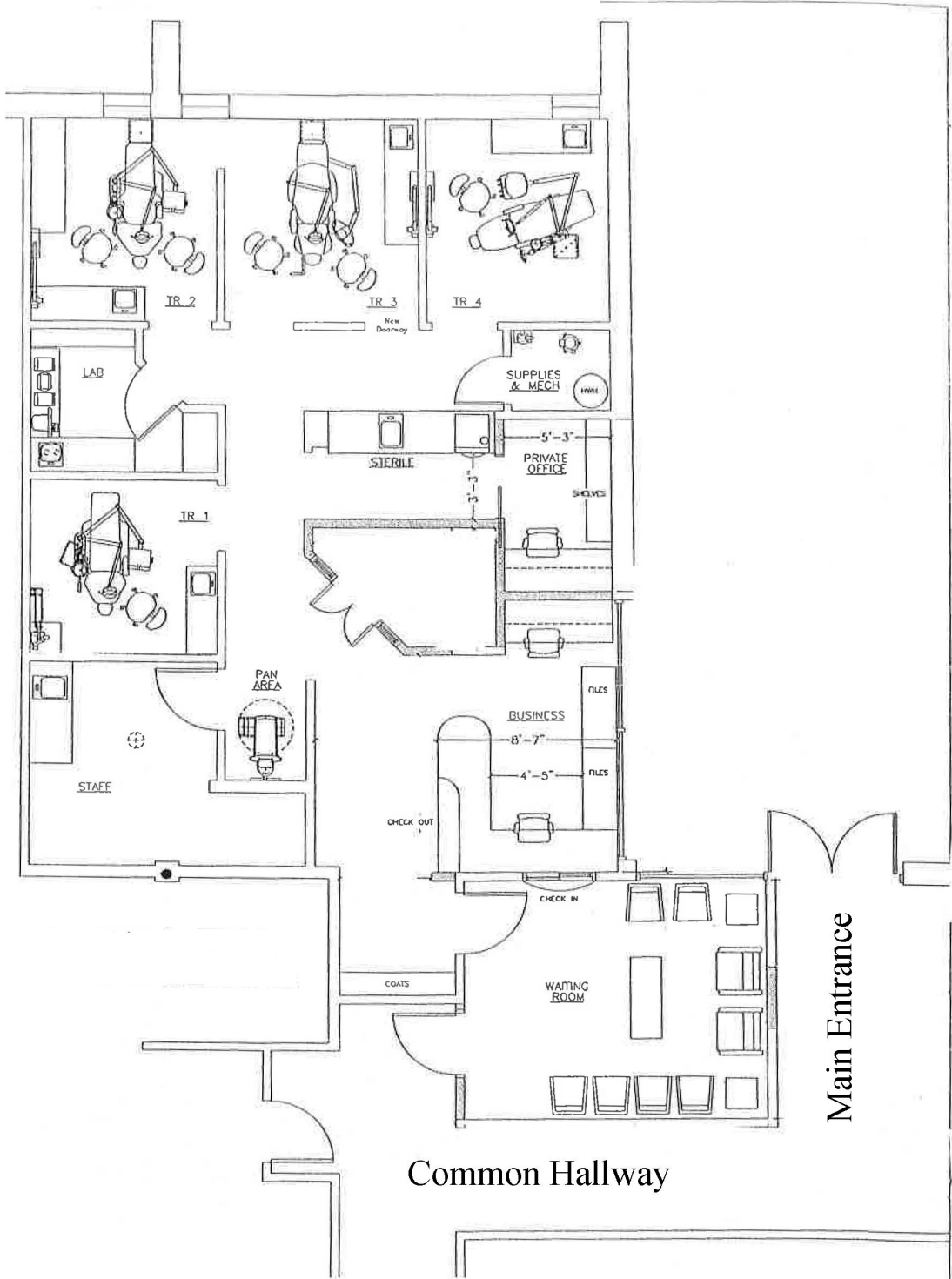
2 Pine West Plaza  
Washington Avenue Ext.  
Albany, NY 12205

Phone: 518-438-3521

[www.TouheyAssociates.com](http://www.TouheyAssociates.com)  
[info@TouheyAssociates.com](mailto:info@TouheyAssociates.com)

# Pine West Plaza Building 3

## 1,455 RSF





Touhey Associates Offices

Pine West Plaza Building 3

Washington Square

Washington Avenue Extension

Pine West Plaza

New York State Thruway (I-190)