

5 Pine West Plaza



Touhey Associates is a family owned company with over 35 years of experience in real estate acquisition, development and property management. We own and manage over half a million square feet of office and warehouse space throughout the Capital Region. Pine West Plaza is a full service office park located only minutes from all major highways and routes.

BUILDING SIZE:	40,000 SF
RENTABLE SF:	1,027 RSF
CEILING HEIGHT:	9'
SPRINKLER:	Yes (Common Area)
NATURAL GAS/ AIR CONDITIONING:	Yes
WATER/SEWER:	Public
ELECTRIC SERVICE:	600 AMP, 480V, 3 Phase
ROOF:	EPDM
CONSTRUCTION:	Masonry
PARKING:	Ample

TOUHEY ASSOCIATES

**2 Pine West Plaza
Washington Avenue Ext.
Albany, NY 12205**

Phone: 518-438-3521

Fax: 518-452-0600

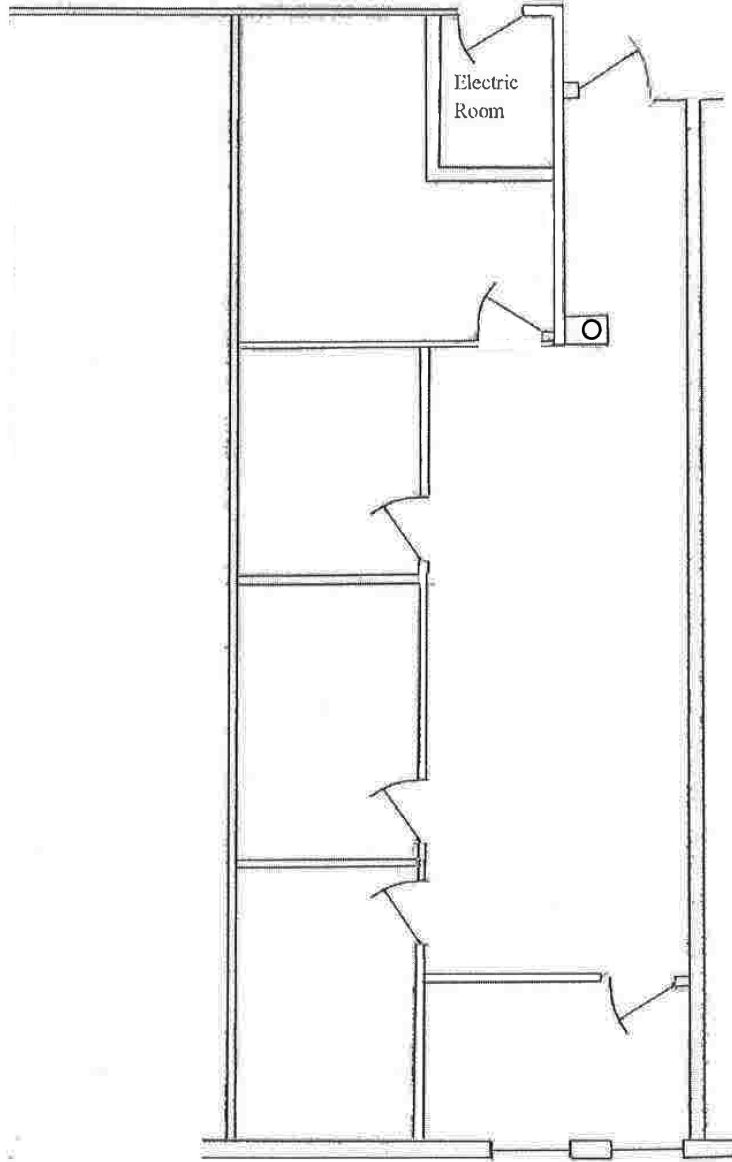
www.TouheyAssociates.com

info@TouheyAssociates.com

Pine West 5

1,027 RSF

Common Hallway



Parking Lot

